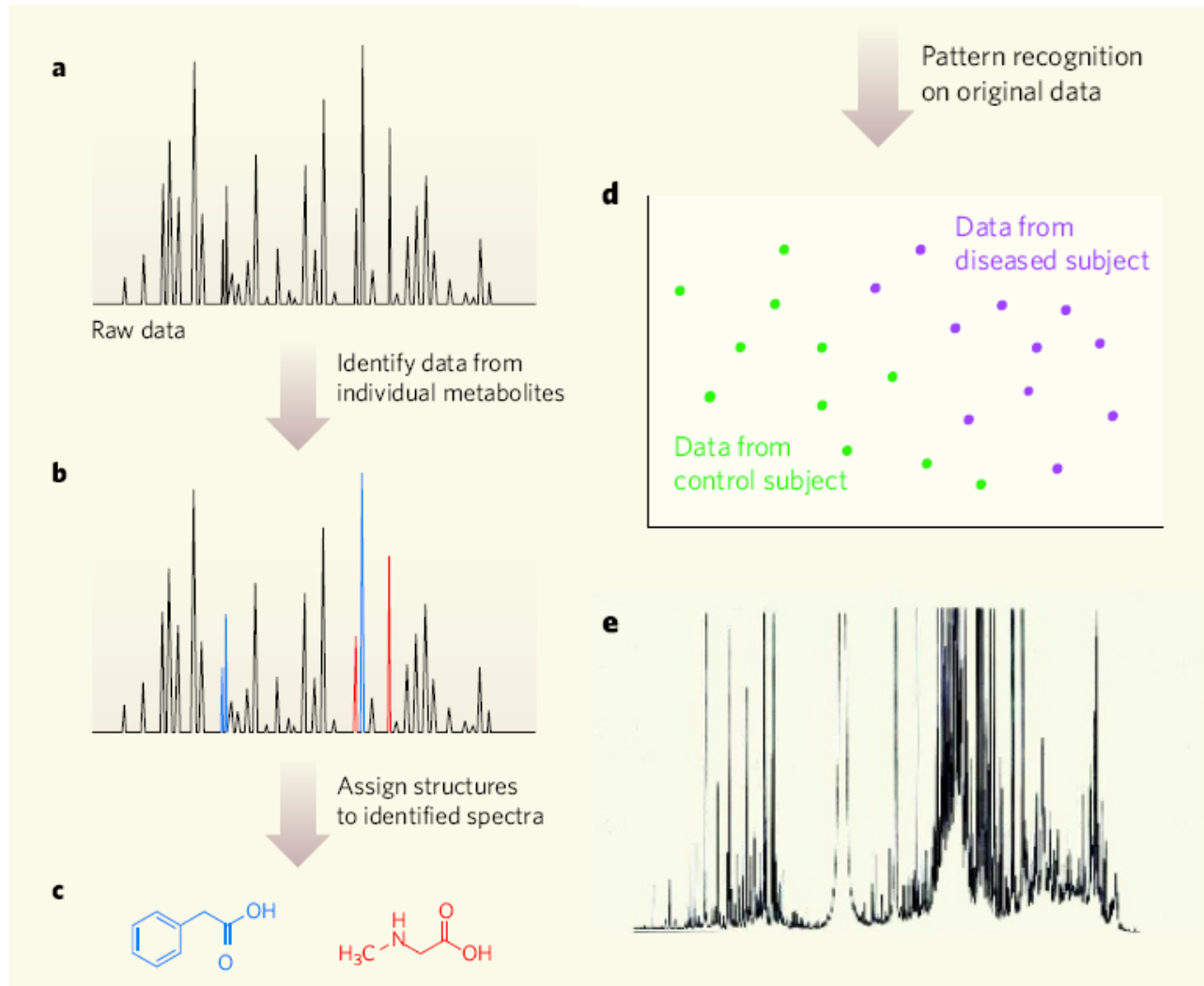


Metabolomics Is Not New

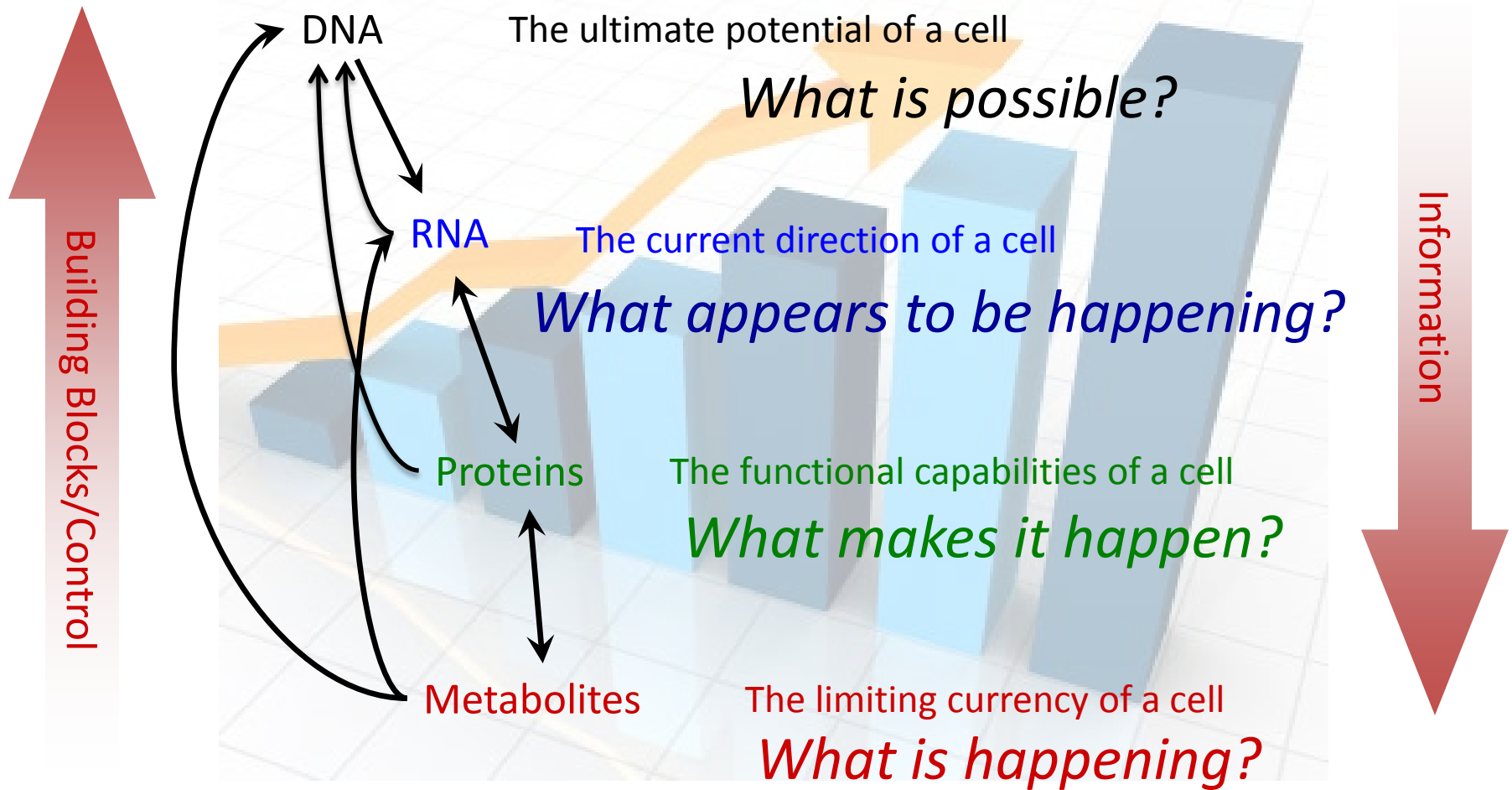
Targeted metabolomics



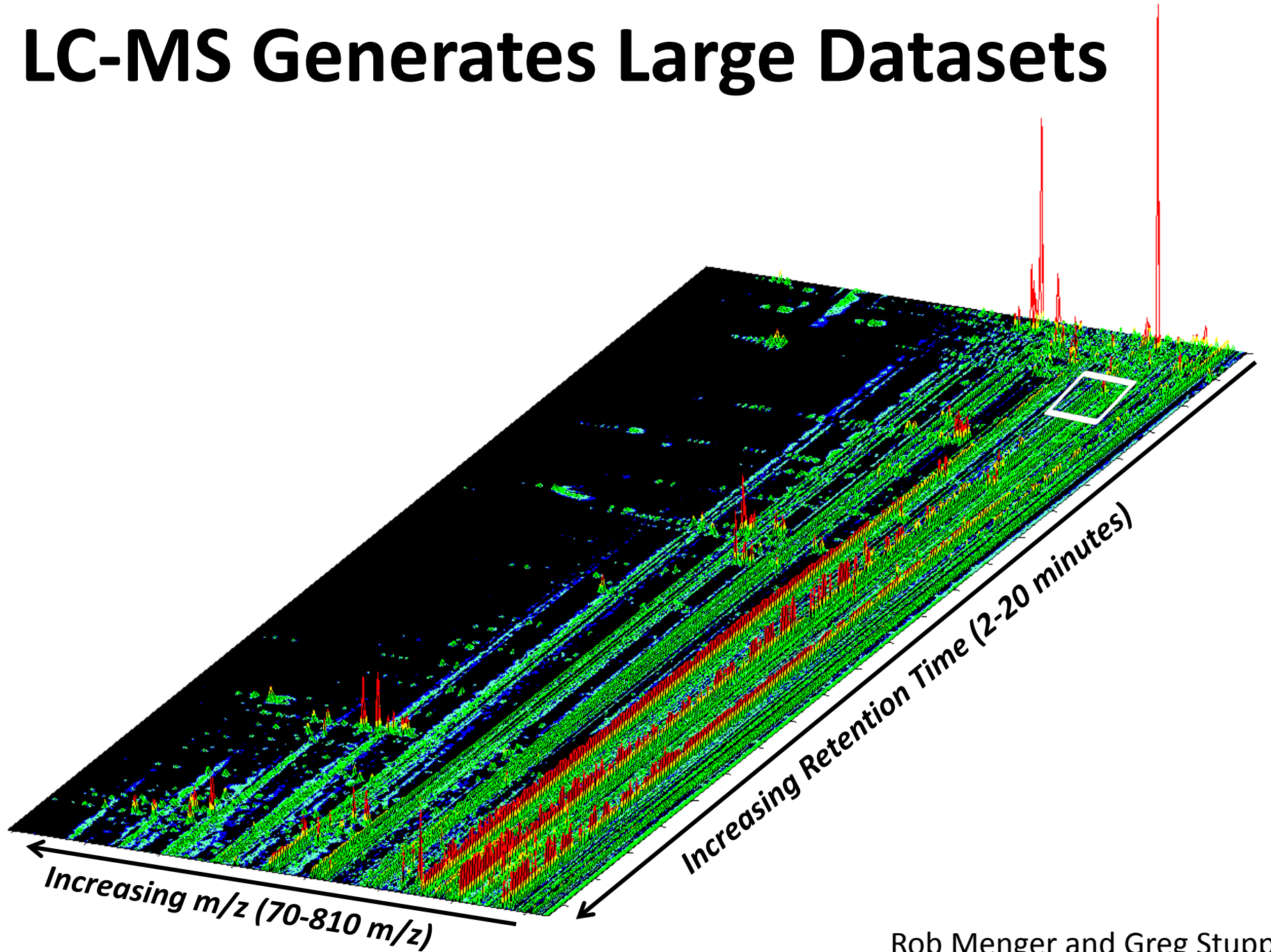
Modern Global Metabolomics Generates and Mines Large Datasets



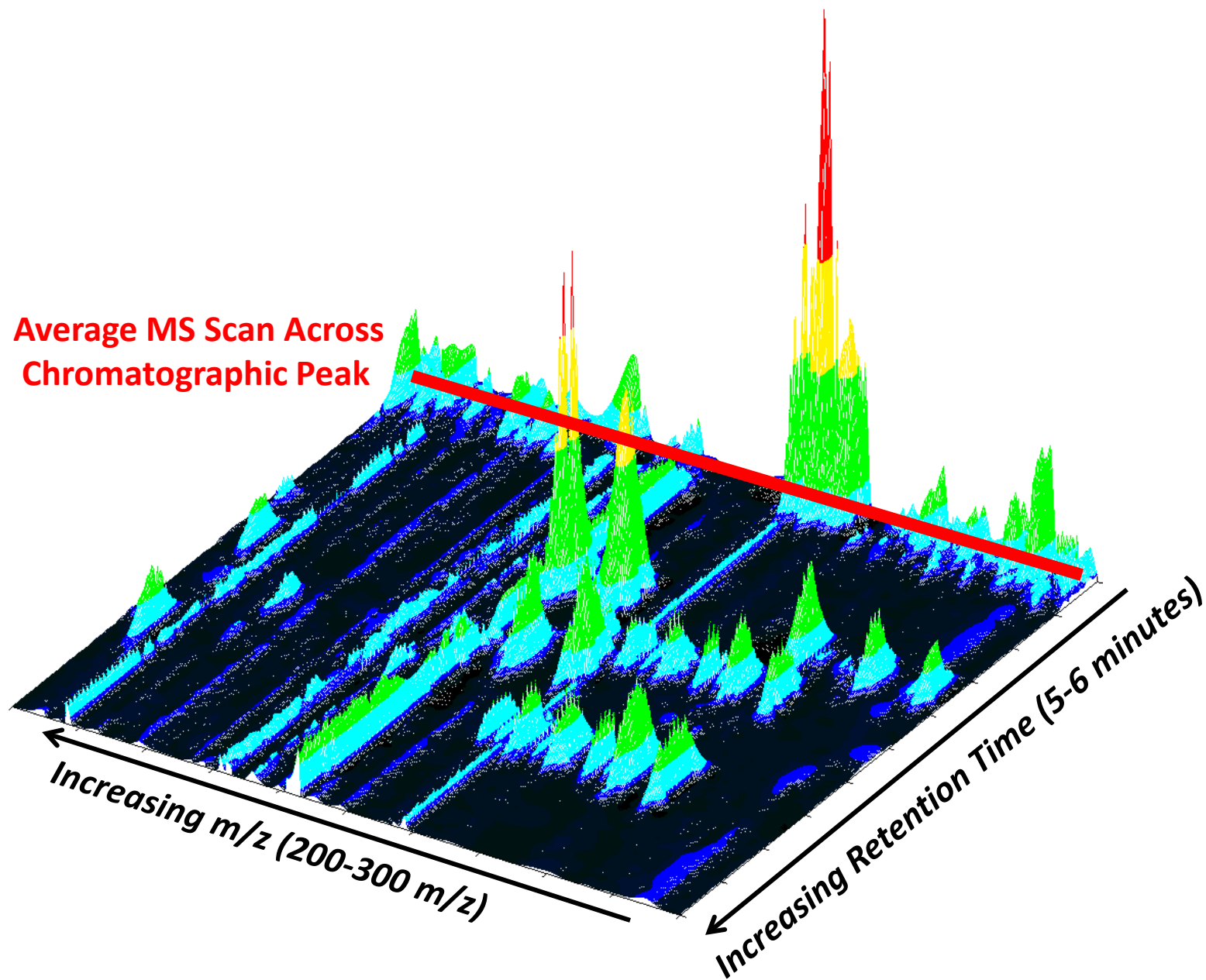
Interactions of Networks in the Cell: Systems Biology



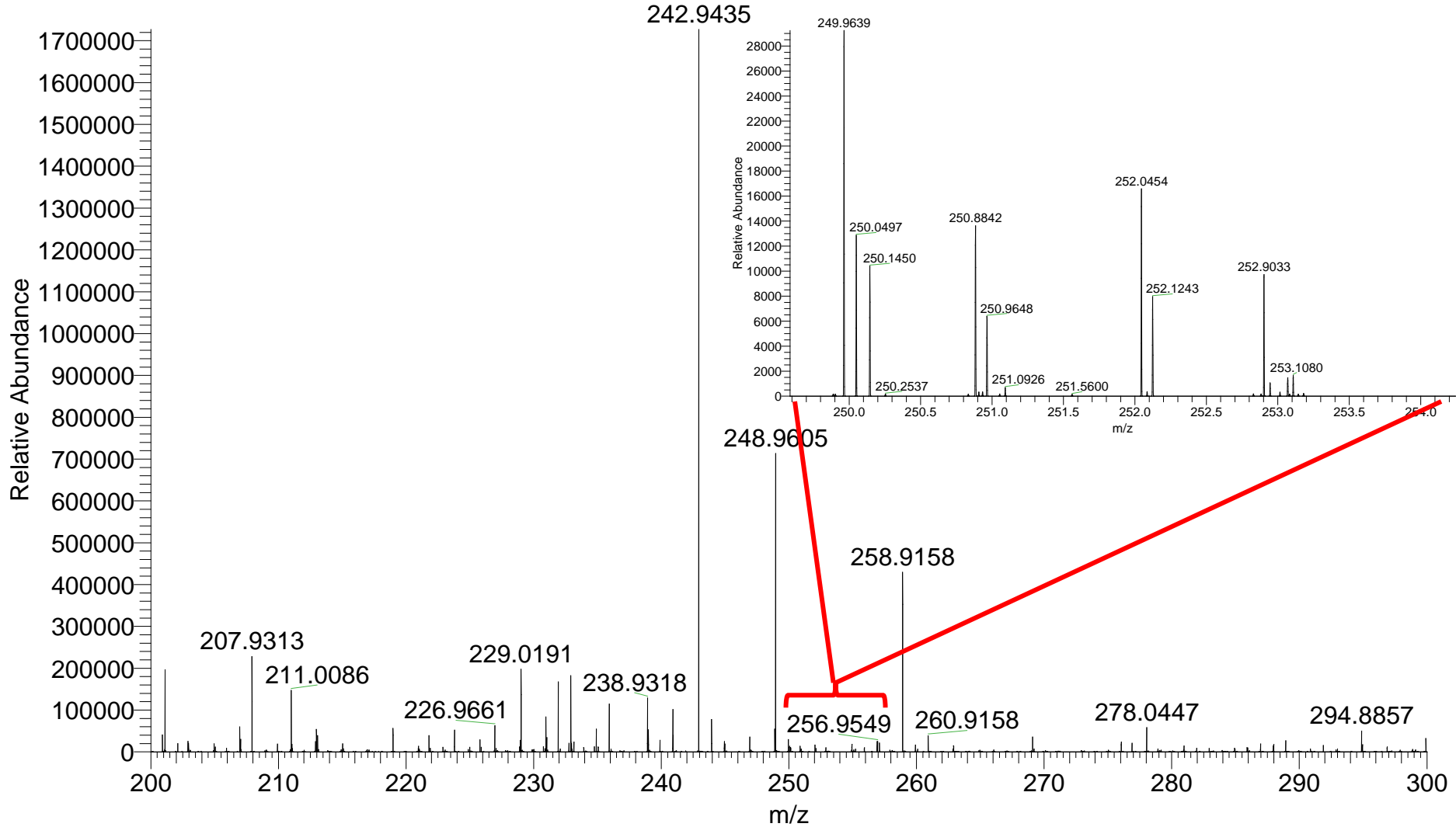
LC-MS Generates Large Datasets



Average MS Scan Across
Chromatographic Peak

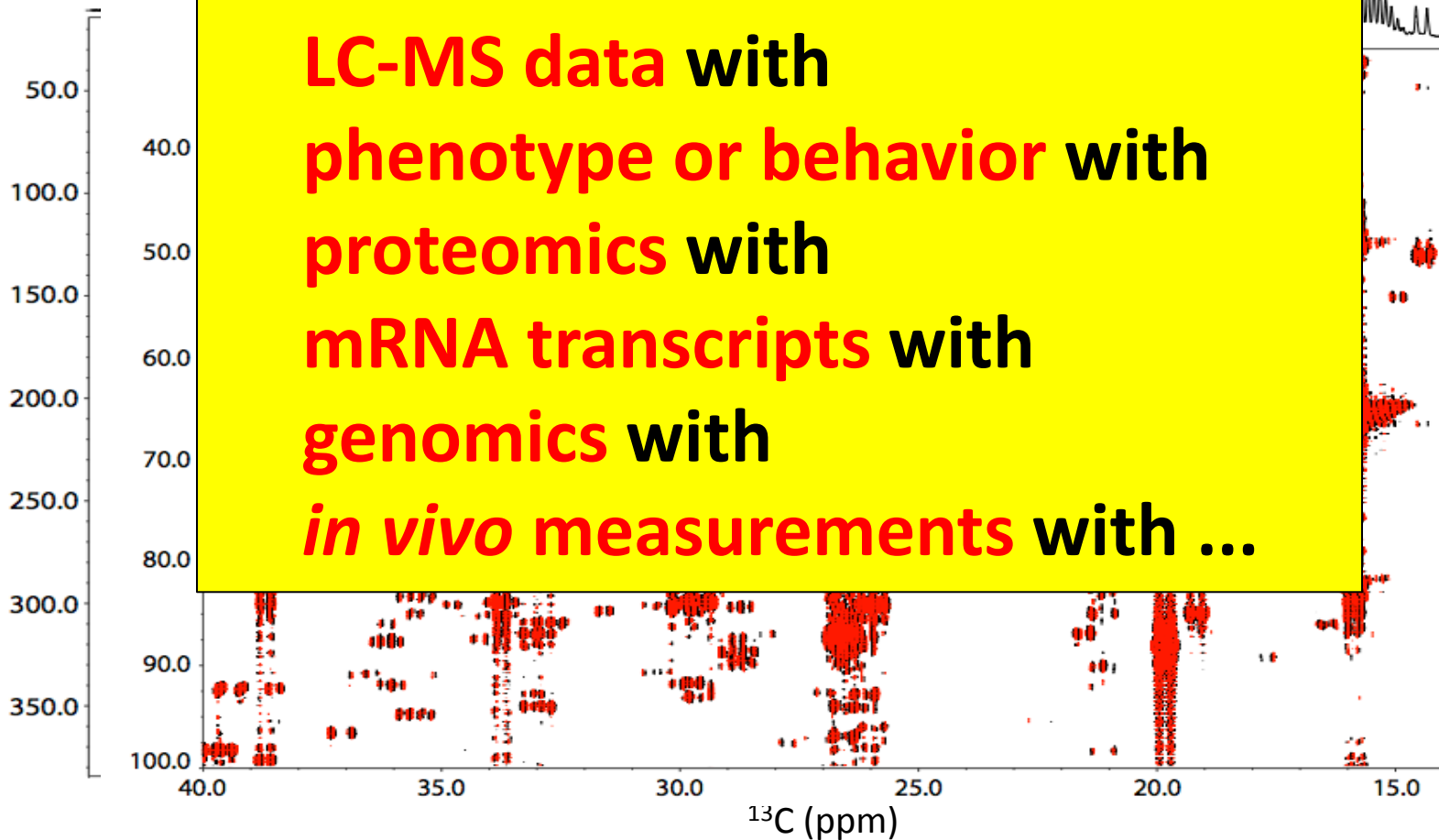


Average of ca. 25 MS scans

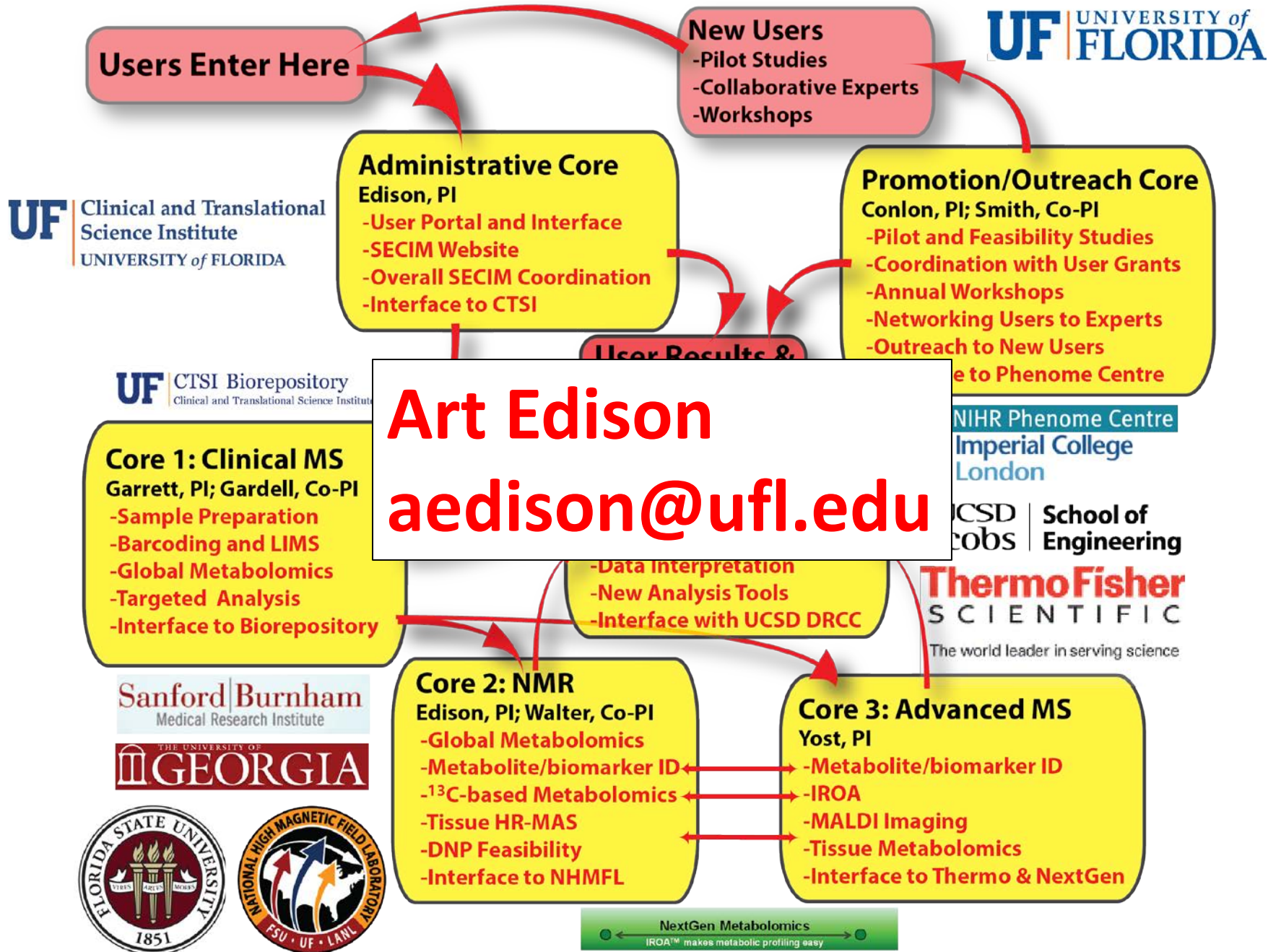


NMR also Generates Large Datasets

We want to correlate
NMR data with
LC-MS data with
phenotype or behavior with
proteomics with
mRNA transcripts with
genomics with
in vivo measurements with ...



Southeast Resource Center for Integrated Metabolomics (SECIM)



Art Edison
aedison@ufl.edu