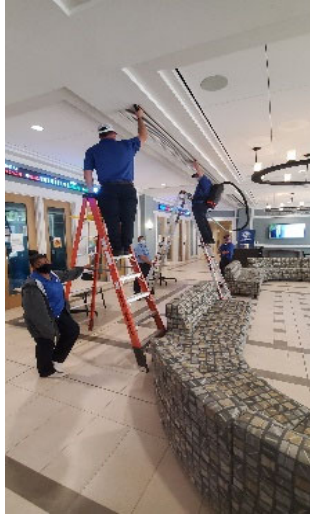
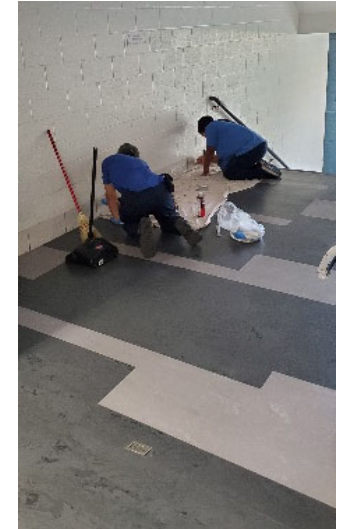


WITH EVERY STEP

HIGH PERFORMANCE WORK TEAMS



- Customer-focused teams that combine minor maintenance with custodial services to expedite and streamline repairs and custodial cleaning assignments.



- HPWTs are assigned to a cluster of facilities and serve as the first point of contact for customers in virtually all minor maintenance related issues.



WITH EVERY STEP

THE HIGH PERFORMANCE WORK TEAM DIFFERENCE

	CUSTODIAL SERVICES ONLY	MAINTENANCE WORK ORDERS	HIGH PERFORMANCE WORK TEAMS (COMBINATION OF CUSTODIAL & MINOR MAINTENANCE)
• Clean & Disinfect Surfaces/Touchpoints	✓		✓
• Office & Cubical Cleaning	✓		✓
• Classroom & Lecture Hall Cleaning	✓		✓
• Clinical Patient & Research Cleaning	✓		✓
• Conference Rooms & Auditoriums	✓		✓
• Break Rooms & Water Fountains	✓		✓
• Restrooms, Showers & Locker Rooms	✓		✓
• Hallways, Stairs, Elevators & Entrances	✓		✓
• Remove Trash, Recycle & Compost	✓		✓
• Maintain Floors and Carpet	✓		✓
• Repairs – Door Latches, Hinges, & Handles		✓	✓
• Repairs – Stop Minor Leak & Shut Off Faucets		✓	✓
• Repairs – Replace Carpet Tile		✓	✓
• Repairs – Clear Clogged Drains		✓	✓
• Repairs – Patch and Paint Interior Walls		✓	✓
• Repairs – Pressure Wash Entrances & Steps		✓	✓
• Repairs – Ceiling Tile Grid		✓	✓
• Repairs – Change Light Bulbs		✓	✓
• PM – Inspect Entrance & Exit Doors and Light Signs		✓	✓
• PM – Inspect Electrical & Mechanical Rooms		✓	✓
• PM – Identify Trip Hazards Inside/Outside		✓	✓
• PM – Inspect Disabled Door Openers		✓	✓
• Mechanical Lift Operations (dusting/window cleaning)			✓

WITH EVERY STEP

HIGH PERFORMANCE WORK TEAM

ENGINEERING SOUTH

• Benton Hall	25,878
• Black Hall	37,307
• Chemical Engineering	53,532
• Malachowsky	242,218
• Engineering HR South	2,908
• Larson Hall	42,726
• Mech & Aero Eng. A	41,491
• Nanoscale Research	55,786
• New Engineering Bldg.	142,093
• Particle Science	32,069
• Phelps Lab	9,877
• Psychology Bldg.	64,819
• Chem. Eng. Stud. Ctr.	11,789
Total NSF	762,493



HSC RESEARCH COMPLEX

• Aquatic Pathobiology	6,970
• Cancer & Genetic Ctr.	281,728
• Clinical & Trans. Res.	127,706
• Emerging Pathogen	93,018
• Environ./Human Tox.	15,800
• HOP Modular Building	12,413
• HSC Modular Building	10,514
Total NSF	538,149

BUSINESS COMPLEX

• Anderson Hall	47,628
• Bryan Hall	49,078
• Gerson Hall	41,736
• Heavener Hall	60,216
• Hough Hall	72,724
• Matherly Hall	58,458
• Stuzin Hall	59,799
• Tigert Hall	73,685
Total NSF	463,324

ENGINEERING NORTH

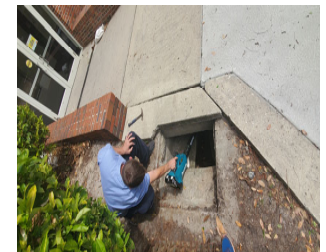
• Material Engineering	34,902
• Mech & Aero Eng. B	40,981
• Mech & Aero Eng. C	26,322
• Nuclear Reactor	15,941
• Nuclear Science	70,900
• Reed Laboratory	15,729
• Rhines Hall	76,304
• Weil Chilled Water Plant	9,299
• Weil Hall	158,439
• Weimer Hall	162,807
• Wertheim Laboratory	82,080
Total NSF	693,704

PROGRESS TRIANGLE

• Auxiliary Library	42,505
• Biotech Building #1	43,223
• CCE Facility	16,732
• CTT Restrooms	490
• CTT Qualification Lab	8,162
• East Campus	83,526
• East Campus Data Ctr.	26,182
• Innovation Hub	106,000
• Material Lab	20,449
• Norman & Addition	194,859
• Sid Martin Biotech	39,912
• Specific Pathogen	6,598
• TREEO Center	28,943
Total NSF	617,581

* LAW SCHOOL COMPLEX

• Bruton-Geer Hall	49,484
• Holland Law Center	212,458
• Levin Advocacy Center	19,375
Total NSF	281,317



WITH EVERY STEP

HPWT Task List

HPWT Electrical Skills

- Change light bulbs
- Troubleshoot single point of use for power failures

HPWT Plumbing Skills

- Clear clogged drains
- Repair or stop minor water leaks
- Shut off valves as necessary to stop water leaks
- Shutoff leaking faucets
- Repair leaky fixtures
- Troubleshoot leaks in urinals/Toilets
- Perform minor repair of damaged faucets
- Replace batteries in flush valves/Faucets

Scissor Lift Operations



HPWT Carpentry Skills

- Install ceiling tiles
- Inspect handicap door closures
- Perform minor adjustments to door latches
- Perform minor adjustments to door hinges
- Perform minor adjustments to door handles
- Perform minor adjustments to strike plates
- Patch and paint interior walls
- Perform minor painting as needed
- Perform minor repairs on ceiling tile grid
- Repair bathroom partitions to include stall doors and latches
- Assist with plastering projects
- Replace carpet tiles
- Apply cove base to walls
- Lay carpet tiles
- Repair or replace cove base tiles
- Perform minor repairs on handrails
- Perform minor repairs on chairs
- Caulk windows
- Perform minor repair of stairs
- Apply molding around doors to include weather stripping
- Perform minor adjustments to window latches
- Grout and lay ceramic tile on the floor
- Perform temporary fixes on glass door panels

1. What are High Performance Work Teams?

- A carefully selected group goal-focused employees with specialized expertise in minor maintenance (plumbing, electrical, carpentry, painting, etc.), combined complementary custodial services skills.

2. Are High Performance Work Teams replacing those in professional trade shops?

- No, HPWT Maintenance Generalists collaborate with the trade experts when needed to produce consistently superior results.

3. What is the long-term plan for High Performance Work Teams?

- Facilities Services' Strategic Plan includes strategically assimilating the entire campus into HPWTs by 2031.

4. What are some benefits of becoming a High-Performance Work Team facility?

- HPWT employees take ownership in their assigned facilities, and address maintenance issues most times before the customer is ever aware.
- HPWT employees address minor maintenance issues in their facilities within minutes, instead of waiting hours or days for Work Management who is responsible for addressing 1,050 facilities.

5. How many High Performance Work Teams are on campus?

- Currently, there are five (5) High Performance Work Teams (Business Complex, Health Science Center Research Complex, Engineering North, Engineering South, and Progress Triangle).